

OpenText Intelligent Capture

Transforms all paper and electronic documents into business ready content, scaling to meet any requirement



Offers an **end-to-end** capture solution



Harnesses the power of **advanced recognition**



Includes **automated data extraction/OCR**

Associated OpenText products

- **OpenText™ Content Server**
- **OpenText™ Documentum™**
- **OpenText™ Magellan™**

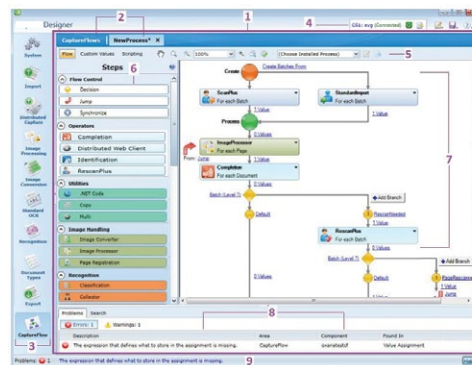
By supporting organizations in their goal to automate and reduce the time and expense of manual document sorting and data entry, OpenText™ Intelligent Capture saves money and improves business processes. It provides a flexible, end-to-end capture solution that includes document classification, data extraction/optical character recognition (OCR), validation and delivery to ECM, ERP and other back-end systems. Organizations gain quick and easy access to critical information while improving productivity.

Feature name	Description
Intelligent document classification	Saves valuable time and reduces the manual pre-sorting of documents through automated document identification
Intelligent data extraction and validation	Reduces manual data entry and ensures the accuracy of information being delivered to other business systems
Branch office scanning and indexing	Decreases shipping costs and processing time through an easy-to-deploy, web-based scanning and indexing client
Capture process designer	Enables IT to quickly and easily build a capture project without any coding with drag and drop process design, point and click configuration and integrated testing environment
Capture desktop client	Offers an all new desktop client for capture operators that can be easily customized for all types of capture tasks: image quality review, document assembly, high-speed data entry and indexing, high-speed data correction and data validation
Modular architecture	Delivers unparalleled flexibility for defining and managing a capture process
Secure platform	Provides tight audit trails as documents are captured and processed
Flexible development environment	Enables organizations to quickly develop capture flow processes to handle the routing of documents, extraction of data and validation of information to meet business requirements
Application monitoring and reporting	Monitors the enterprise capture and content management systems; automatically addresses many known conditions and alerts key line-of-business owners before error conditions affect important business functions

Feature name	Description
Process integration	Connects seamlessly into various back-end databases and content management systems, such as OpenText™ Documentum™, OpenText™ ApplicationXtender, Microsoft® SharePoint® and others
Mobile capture enablement	Offers on-device image capture and clean-up, server-side RESTful services and mobile image enhancement filters and quickly converts any camera-equipped mobile device into a powerful tool to capture information at the point of contact
Real-time capture services	Provides REST-based services designed to meet the emerging needs of mobile and line-of-business applications that use the full power of Intelligent Capture to quickly get content into a business process

Offers an end-to-end capture solution

Intelligent Capture interfaces with hundreds of scanners, leveraging image and scanner interface specification technology, and works with multi-function peripheral devices and network scanners for distributed capture environments. It can also capture documents from emails, network folders and other sources, providing organizations with many document input options for paper and electronic formats. Thirteen of the world's top 25 banks rely on this highly configurable platform, which scales to handle the highest volume requirements. Intelligent Capture also offers an innovative capture workflow GUI to configure high value capture flows to automate manual capture processes, easily mapping to existing business rules and processes. Organizations benefit from the ability to leverage one capture platform running many line-of-business processes and capture flows within a single shared services environment.



OpenText Intelligent Capture includes the capture flow designer which allows organizations to easily configure highly advanced "CaptureFlows" to automate manual processes and support multiple line of business applications

Harnesses the power of advanced recognition

Intelligent Capture uses both traditional document identification techniques—barcodes, page separators and patch codes—as well as additional advanced recognition technology for automated classification and data extraction/OCR. Advanced recognition leverages a broad set of classification technology, including high precision anchors (HPA), keyword analysis, image-based analysis, text string analysis and additional advanced free-form recognition to deploy automated classification to many different document types and applications. These proven capture capabilities provide faster processing and better accuracy than competing technologies.

[Read our blog](#)

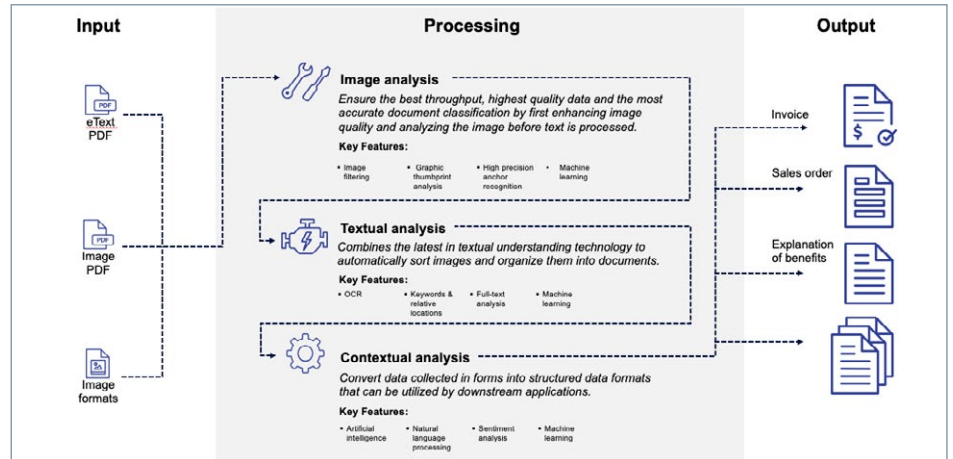
[Download the trial](#)

[Join the conversation](#)

[Keep up to date](#)

[Learn more](#)

Advanced recognition capabilities ensure a fast return on investment. More than 80 percent of customers reported a positive ROI within 12 months and 92 percent within 18 months. Intelligent Capture's automated document classification and data extraction for structured and unstructured documents drive these compelling, industry-leading results.



Automated document and data classification



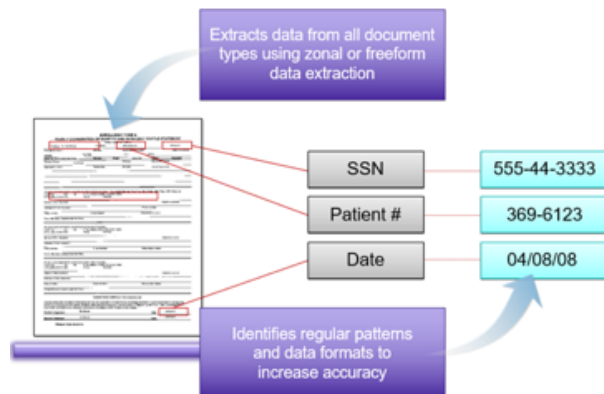
Includes automated data extraction/OCR

Intelligent Capture provides out of the box, key-from-image indexing support, zonal OCR, OCR rubber banding for quick document data extraction and indexing. Extended modules offer fully automated extraction and validation, leveraging multiple technologies, including OCR, ICR, OMR, barcode recognition and voting algorithms to automatically extract data from documents. With full automation through advanced recognition, classification and extraction can be extended to include free-form data extraction from unstructured documents.

"The OpenText technologies have assisted us greatly in achieving our goal to make the client's onboarding process seamless and effective from a digital point of view."

Gerrard Lennox
 Manager, Software Engineering
 Capitec Bank

[Read the full Success story](#)



Extracts data from all document types and identifies regular patterns and formats